

# STORY IN A BOX

---

## STUDIO

### 2025

- Pricing
- Equipment
- Subscription Plans
- Hour Packages
- Ambassador / Partner



INFINITY WALL | BLACK BOX | COLOURED BACKGROUNDS | DRESSING ROOM |  
OFFICE | PANTRY | LIGHTING EQUIPMENT | PARKING | FURNITURE

[hello@storyinabox.pt](mailto:hello@storyinabox.pt)

[@storyinaboxstudio](https://www.instagram.com/storyinaboxstudio)

[storyinabox.pt/studio](https://storyinabox.pt/studio)



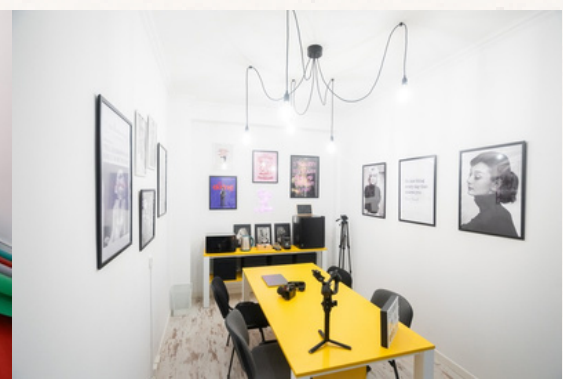
WELCOME TO OUR STUDIO, located next to Lisbon airport.

# CHARACTERISTICS

- Total area: 112m<sup>2</sup>
- Ceiling height: 2.94m.
- White **infinity wall (5.30m x 5.10m)**
- **Black Box** (black flannel curtains around the infinity wall, and removable black carpets)
- Multiple **coloured backgrounds** (including CHROMA KEY)
- **Lighting equipment** available
- Possibility of ordering all types of equipment (cameras, lenses, machinery, etc.) up to 48 hours in advance
- Dressing room, makeup station, office area + pantry, bathroom

# AMENITIES

- |                 |                            |
|-----------------|----------------------------|
| • Coffe machine | • Hangers                  |
| • Tea Kettle    | • Air conditioning         |
| • Microwave     | • Wifi                     |
| • Minibar       | • Natural light            |
| • Steamer       | • Free parking at the door |
| • Charriot      | (several spaces)           |





# PRICING 2025

## Weekdays (during regular hours)\*

|                        |            |
|------------------------|------------|
| 2 hours .....          | 95€ + VAT  |
| 4 hours .....          | 160€ + VAT |
| 6 hours .....          | 230€ + VAT |
| 8 hours .....          | 290€ + VAT |
| 10 hours .....         | 325€ + VAT |
| Extra hours: 40€ + IVA |            |

## Weekends and public holidays (regular hours)\*

|                        |            |
|------------------------|------------|
| 2 hours .....          | 110€ + VAT |
| 4 hours .....          | 200€ + VAT |
| 6 hours .....          | 280€ + VAT |
| 8 hours .....          | 350€ + VAT |
| 10 hours .....         | 420€ + VAT |
| Extra hours: 50€ + IVA |            |

**Extra Regular Hours\*\*** ..... 60€/hora + VAT

\* 9h – 20h

\*\* before 9h or after 20h

## General Notes

- Included in the price of the studio are: two SmallRig 3621 RC220B COB LED Bi-Colour lights, two stands, two softboxes, one reflector and several E-Colour sheet filters.
- We have extra lighting (SWIT CL-120D 120W 2:1 Bi-colour SMD LED panel light) for 40€ + VAT each panel.
- We can supply other equipment (lighting, sound, lenses, cameras) – prices on request.
- Coffee, tea and water: €2.5 per person in the studio.
- Storage room (to store equipment between sessions): price on request





## EQUIPMENT



SmallRig 3621 RC220B COB  
LED Light Bi-Color (2x)  
**Included in the price of the  
Studio**  
(External Rental: 45€ + VAT)



SmallRig 3585 RAD55  
Parabolic Softbox (2x)  
**Included in the price of the  
Studio**  
(External Rental: 20€ + VAT)



Avenger Baby Stand 30 Silver  
300cm Steel Triple Riser (3x)  
**Included in the price of the  
Studio**  
(External Rental: 15€ + VAT)



SWIT CL-120D 120W 2:1 Bi-  
color SMD LED panel light (3x)  
**Studio price: 40€ + VAT**  
External Rental: 60€ + VAT



Avenger Junior Boom, w/Built-in  
Grip Head & counterweight (2x)  
**Studio price: 10€ + VAT**  
External Rental: 15€ + VAT



Avenger Combo Stand 35 Silver  
350cm Steel Double Riser (2x)  
**Studio price: 10€ + VAT**  
External Rental: 15€ + VAT



AVENGER I4834 Reflective Display  
Gold/White 120x90cm  
**Included in the price of the Studio**  
(External Rental: 15€ + VAT)



SENNHEISER XS Wireless Digital  
Portable Lavalier Set  
**Value: 35€ + VAT**



VideoMic Pro+  
Premium On-camera  
Microphone  
**Value: 25€ + VAT**



# EQUIPMENT



E-Colour+ Sheet Filters  
(various colours available)  
**Included in the price of the Studio**



SUPERIOR Background Paper  
BRICK - 2.72x11m  
**Included in the price of the Studio**



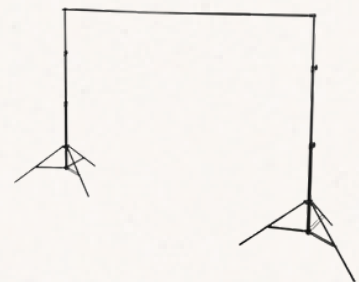
SUPERIOR Background Paper  
SPRUCE - 2.72x11m  
**Included in the price of the Studio**



SUPERIOR Background Paper  
LUNAR GRAY - 2.72x11m  
**Included in the price of the Studio**



BD Paper Back VERY GREEN  
Chroma Key 2.72x11m  
**Included in the price of the Studio**



Removable backdrop holder  
**Included in the price of the Studio**



Portable blind for light design  
**Included in the price of the Studio**



Fan  
**Included in the price of the Studio**



Projector UMOVIEE WiFi/Bluetooth  
Full HD 1080P, 9500 Lum  
**Value: 25€ + VAT**



# MOVEABLE FURNITURE



Petrol blue velvet sofa,  
cushions and beige rug



Height-adjustable black seat



White armchair



Golden mirror



Petrol green velvet high chair  
with gold feet (x3)



Black table, 60cmx60cm  
Height: 102cm





# MOVEABLE FURNITURE



122cm white folding table



Black folding chairs (6x)



White folding chairs (6x)



Artificial Bamboo Plant  
(170cm tall)



Vintage Commode in Wood  
(75cm tall)



# SUBSCRIPTION PLANS

## Rear Window

**320€/a month**

(equivalent to 32€/hour)

Up to **10 hours** of studio per month

Multiple Entries

Daily minimum: 2 hours

## Citizen Kane

**450€/a month**

(equivalent to 30€/hour)

Up to **15 hours** of studio per month

Multiple Entries

Daily minimum: 2 hours

## The Godfather

**560€/a month**

(equivalent to 28€/hour)

Up to **20h** of studio per month

Multiple Entries

Daily minimum: 2 hours

All plans have a 3-month lock-in period.

## General Notes

- VAT at the legal rate in force must be added to the amounts indicated.
- Payment by bank transfer at the beginning of each month.
- If, after using up the monthly hours of your plan, you want more hours, the price of each hour is 32€ + VAT.
- Hours not used in a month can be transferred to the following month at no extra cost. However, at the end of the 3-month loyalty period, unused hours can only be carried over to the next month if the loyalty period is renewed.
- There are no refunds for unused hours.
- In subscription plans, the hours must be used on weekdays and within regular hours (9am to 8pm).
- Weekends and after hours: 10€ + VAT / hour paid on the day.





# TIME PACKAGES

## Tarzan

**360€**

(equivalent to 36€/hour)

**10 hours** of studio

Multiple Entries

Daily minimum: 2 hours

## Alice in Wonderland

**510€**

(equivalent to 34€/hour)

**15 hours** of studio

Multiple Entries

Daily minimum: 2 hours

## Lion King

**640€**

(equivalent to 32€/hour)

**20 hours** of studio

Multiple Entries

Daily minimum: 2 hours

Without loyalty.  
Hours to be spent within 90 days.

## General Notes

- VAT at the legal rate in force must be added to the amounts indicated.
- The hours must be used on weekdays and within regular hours (9am to 8pm).
- Weekends and after hours: 10€ + VAT / hour paid on the day.
- There are no refunds for unused hours.



# AMBASSADOR/PARTNER

**As our ambassador/partner, we can count on you to help publicise our studio 😊**

And of course, you're entitled to an exclusive plan where you can enjoy greater discounts and advantages!

## Values and advantages

- **20% discount** on weekday prices
- **15% discount** on weekend / after hours prices
- **15% discount** on SWIT CL-120D 120W 2:1 Bi-colour SMD LED panel light
- Mandatory minimum use of only 1x per month (minimum 4h)

## Compromise

- Three Instagram stories per production, 1 of them spoken - always identifying @storyinaboxstudio
- Identification of the studio in the posts sharing the backstage and final images/videos of each production
- Authorisation for the studio to publish some of the final images of each production on its Instagram page.

## General Notes

- VAT at the legal rate in force must be added to the amounts indicated.
- This is an exclusive plan, reviewed every three months.